

I.D.ology

Handy Reader PT-280



I·D·OLOGY

IDENTIFY WITH IT

**1324 West Clairemont Avenue
Eau Claire, WI 54701
Phone: 715-834-9922**

www.idology@id-ology.com

MEMORY
COUNT

BLUETOOTH
INDICATOR
AND BATTERY
LEVEL

POWER
BUTTON

BLUETOOTH
LINK BUTTON

SCROLL UP

SCROLL DOWN

READ
BUTTON
/ENTER
BUTTON



Reader Characteristics

Frequency	134.2kHz read and write
Protocol	ISO11784/5 FDX-A, FDX-B, EM4102, HDX
Reading range	14 /15cm (12mm×2mm, glass tag FDXB) 9/11cm (12mm x 2mm glass tag FDXA) 14/15 cm or 6" eartag HDX (depending on manufacturer) 28/30cm or 12" ear tag FDXB (depends on the provider)
Display	128×64, black & white OLED
Button	4 buttons
Indication	Battery charge level, Bluetooth, Buzzer
Communication Interface	Mini-USB, Serial comport + Bluetooth virtual comport
Power supply	Lithium Ion battery, 5000mAh, 3.7V
Dimensions	650mm (L)×63(W)×45(H)
Weight	460g
Charging mode	Mini USB
Accessories	Mini USB cable, User manual.
Compliances certifications	FCC - CE
Memory	Up to 800 unique ear tag or transponder numbers

Table of Contents

Characteristics of the PT-280.....	page 3
Reader Functions.....	page 5
Operating the Reader	page 6
Working with I.D.ology Term	pages 8
Step by step for direct read.....	page 12
Accessories.....	page 14

Bluetooth PT-280 Reader

All readers are delivered with integrated Bluetooth technology. The Bluetooth function consumes energy. It is therefore recommended to activate this function only for the time necessary for its use.

To stop Bluetooth communication, simply select the “Bluetooth” menu on the reader and disable the function. Communication via Bluetooth is limited to around fifteen meters and depends on the environment of your PC. To enable Bluetooth on your PC, please consult your computer user manual. If your PC needs a code, enter 1234.

Data transmission by Bluetooth or via the USB cable

To transmit the tag numbers read or the numbers recorded in the memory (maximum 800), via Bluetooth or using the USB cable you must first download the I.D.ology Term software from our website.

Operating the Reader:

The reader has four buttons:

1. power button
2. Scroll up
3. Scroll down
4. Read/enter

Top left button is the power button

Two middle buttons to scroll the menu on the reader

Bottom button to read tags and confirm settings in the reader menu.

Reader menu:

When powering on the reader, the screen will say “scan”.

Pressing the up-arrow button will take you to the menu of the reader.

Bluetooth:

The first setting is the Bluetooth option.

To activate Bluetooth, press the “ok” button to enable and disable Bluetooth.

Once done, press the “ok” button to save your selection. When Bluetooth is enabled, you will see a flashing blue LED light. Once a Bluetooth connection is complete, the flashing blue light will change to a solid blue light.

Memory:

Pressing the up-arrow, a second time will bring up memory option.

Choose whether to turn on or off the memory and again press “ok” to save your choice.

When memory option is activated, all unique tags read will be stored in the reader for download to computer later.

The reader will display a count unique of tags read.

If the same tag is read more than once, the reader will display “DUP” in the right corner of the screen.

Language:

Pressing the up-arrow again will bring you to the Language option.

The reader supports English, Spanish, Italian, Portuguese, Polish and Dutch.

To change language, press the down arrow button and scroll until you reach the one you would like to use. You must press “ok” to confirm your choice of language.

Press “ok” again to return to the scan screen.

Battery:

The reader is equipped with a rechargeable Lithium/ion battery.

It can be recharged by connecting the reader to a USB port.

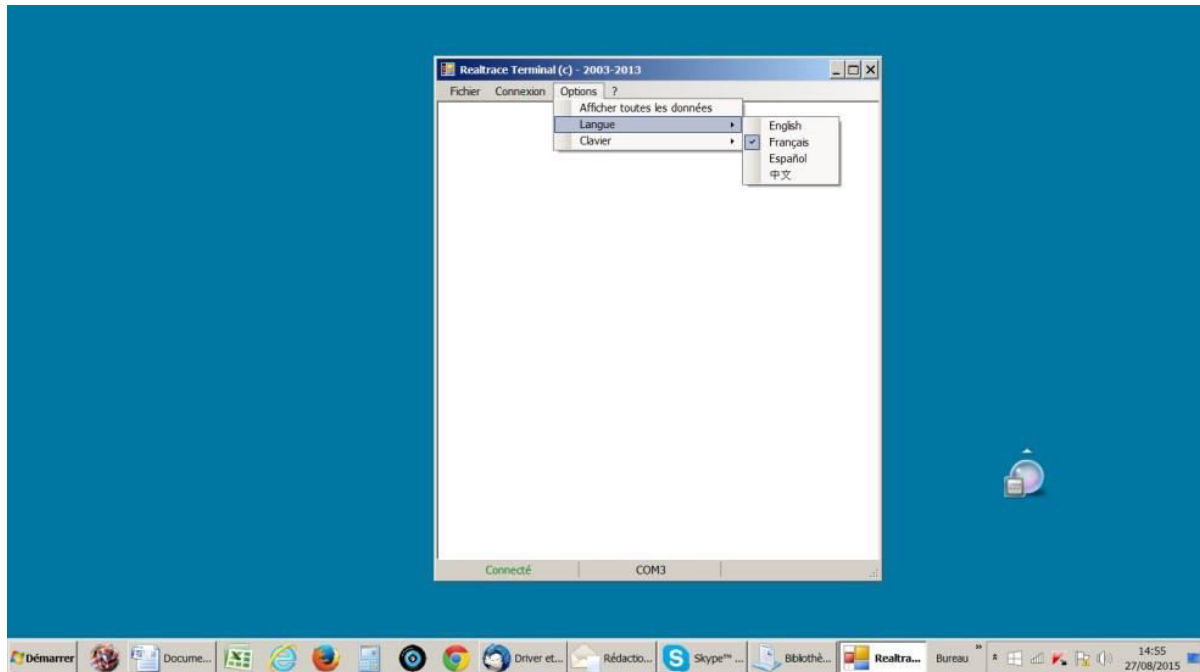
A red LED light indicates that recharging is in progress, a green LED indicates a fully charged reader.

Communication between PT-280 and a PC

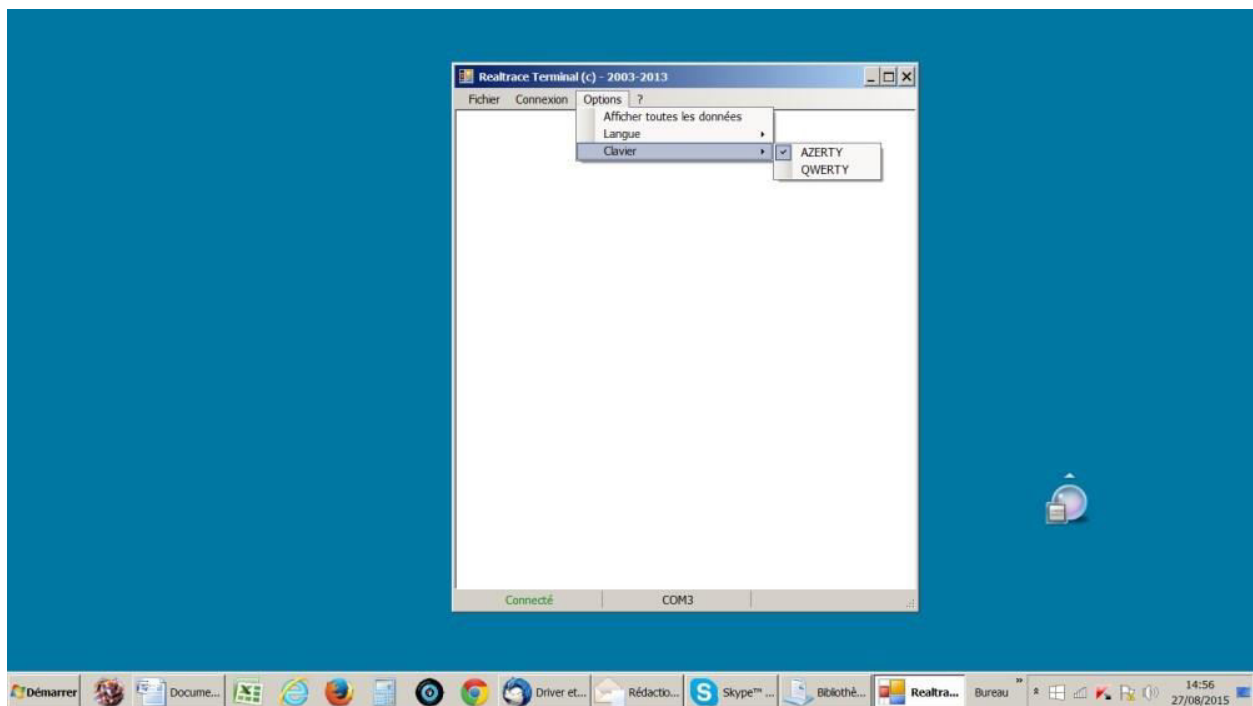
To transfer the contents of the memory you must connect the reader to a PC via the USB cable or via Bluetooth. You must then select the “Memory” menu and follow the instructions given on the display. If the reader is connected to a PC it will transfer the number of the tag read on each reading. It is not necessary for the “Memory” function to be activated to carry out this transfer. Caution: for the reader to communicate with a PC, you must first link the reader via Bluetooth and connect using the I.D.ology Term software. The I.D.ology Term software can be found at <https://id-ology.com> Under downloads section on the page.

UNDERSTANDING I.D.OLOGY TERM

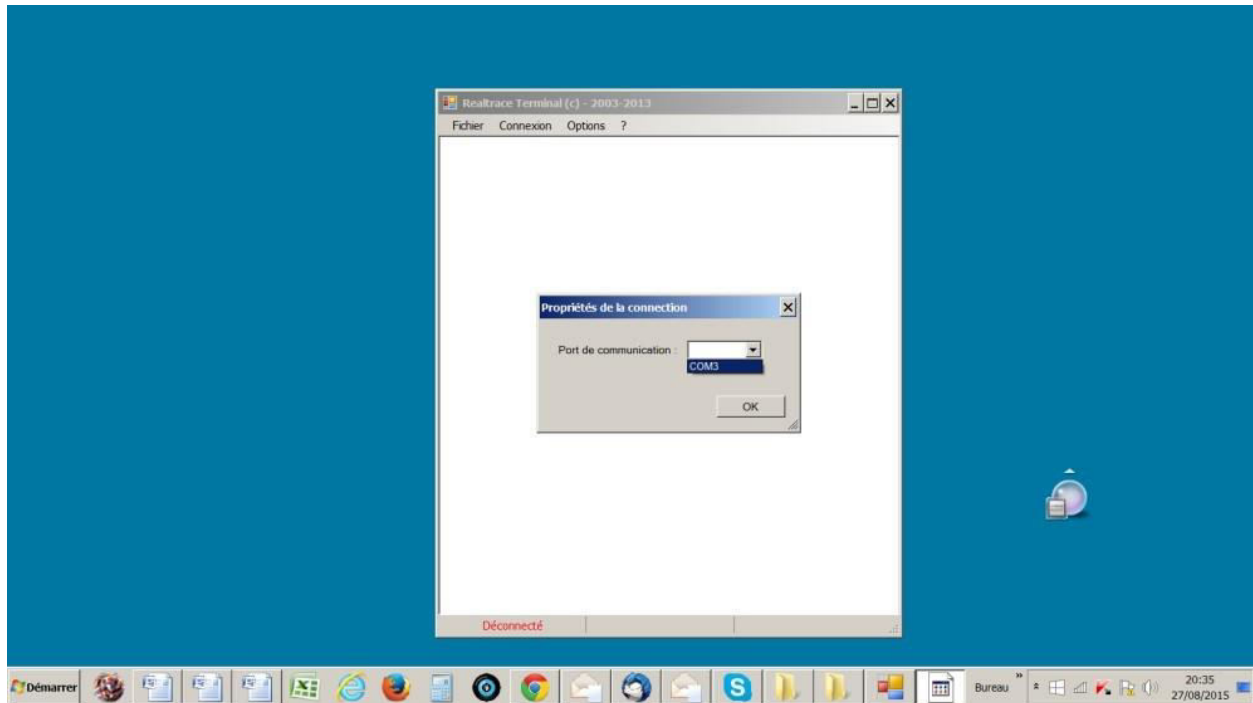
LANGUAGE SELECTION



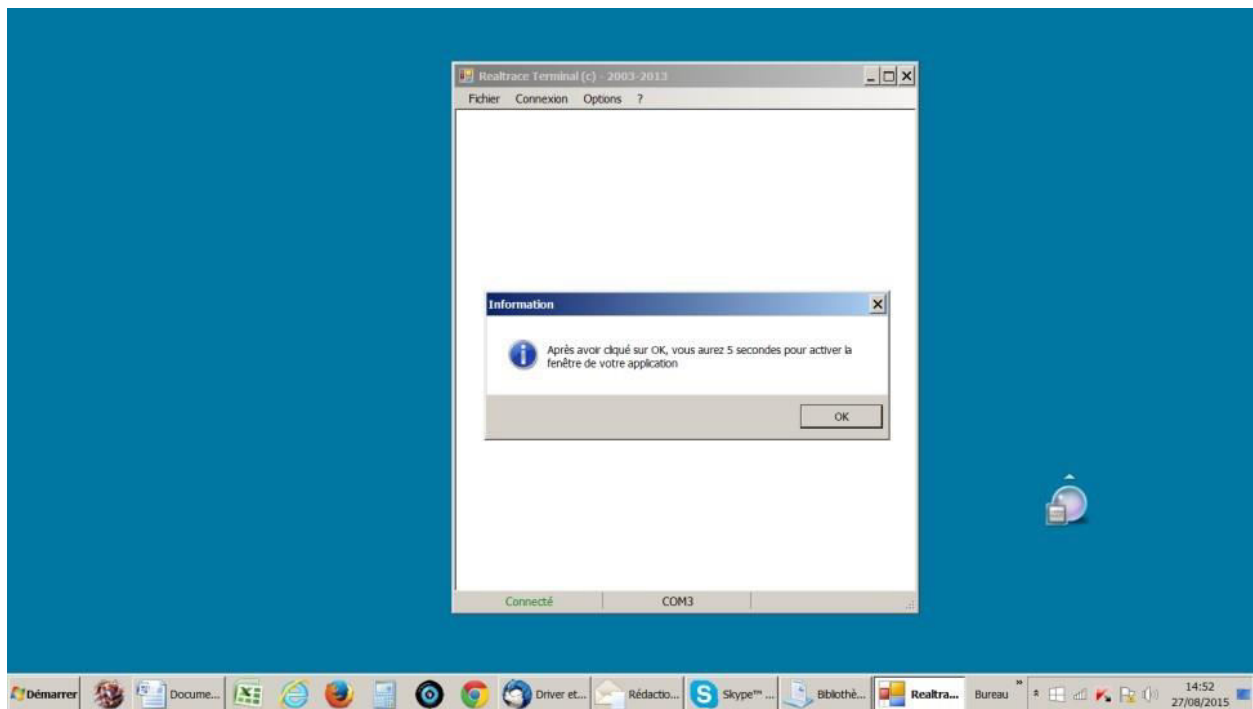
KEYBOARD TYPE



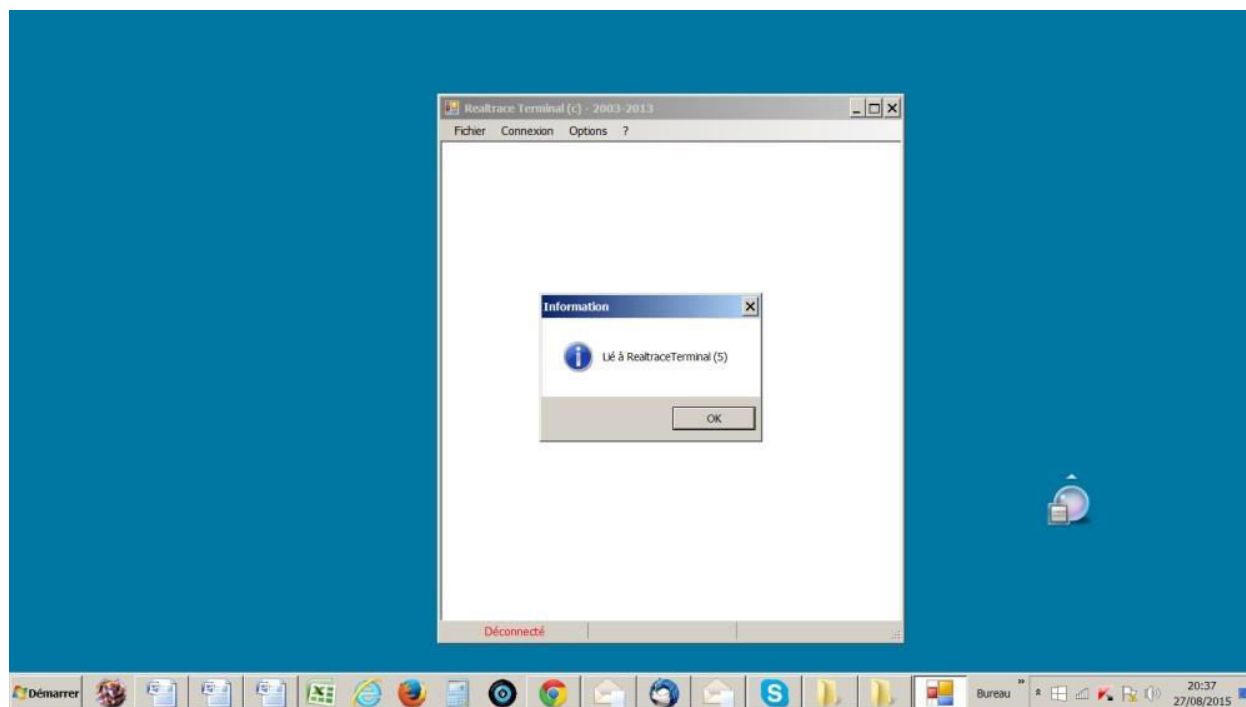
COMMUNICATION PORT SELECTION



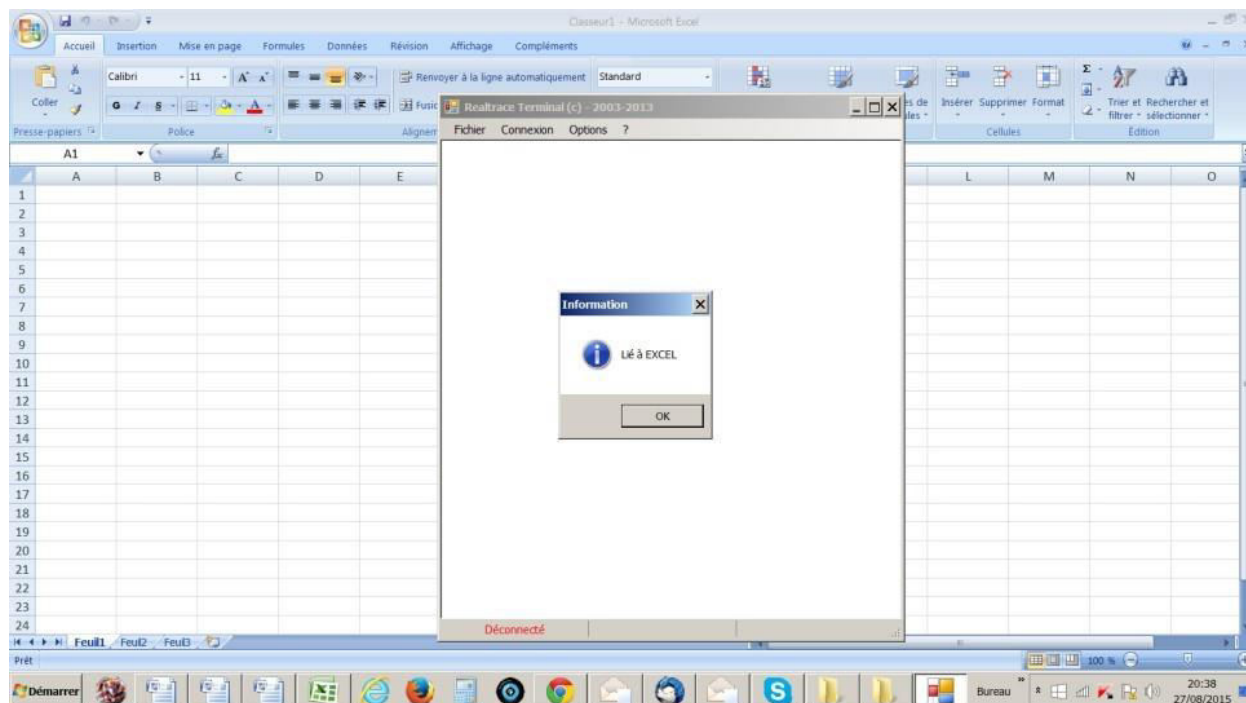
LINKING AN APPLICATION



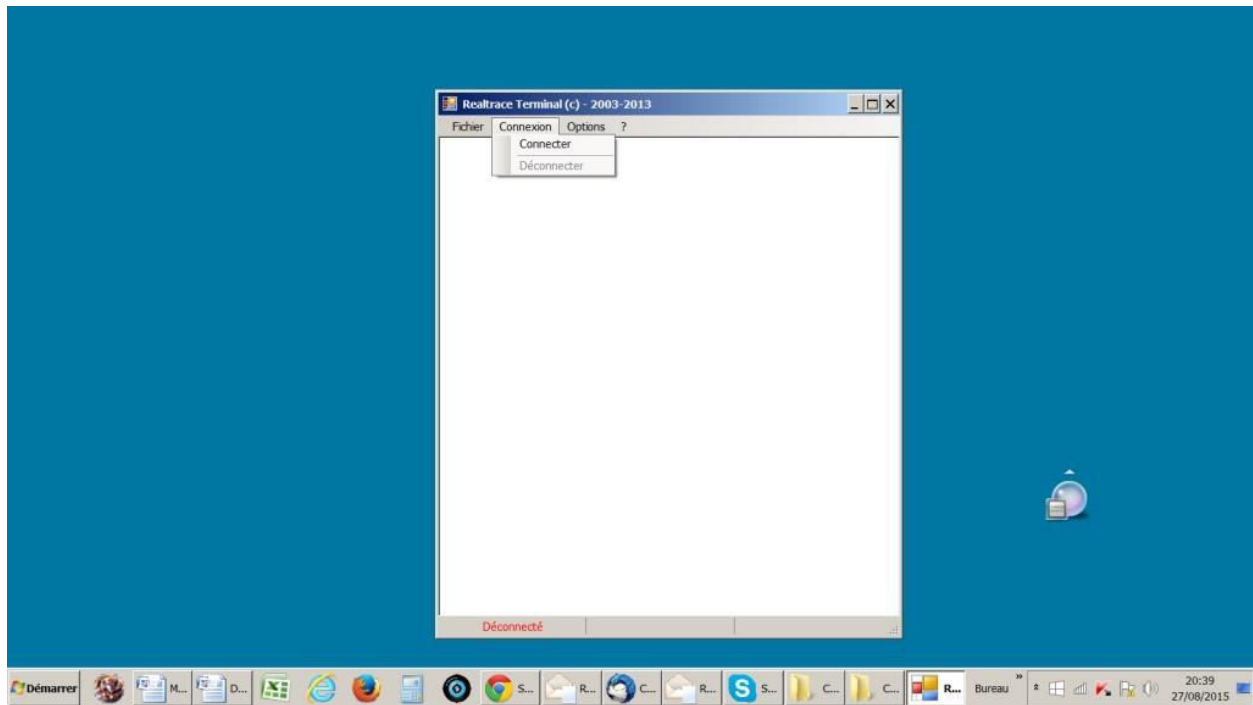
SELECTING APPLICATION AFTER THE 5-SECOND DELAY



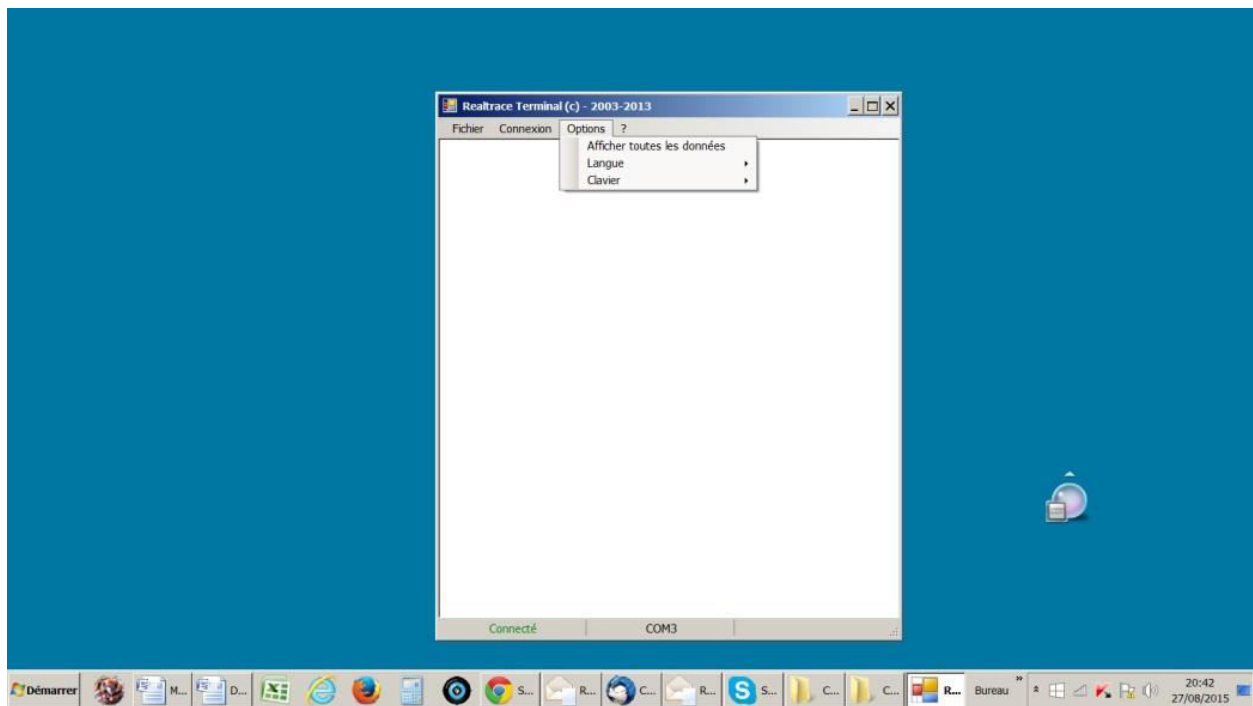
APPLICATION OPENS WITHIN 5 SECONDS: EXCEL



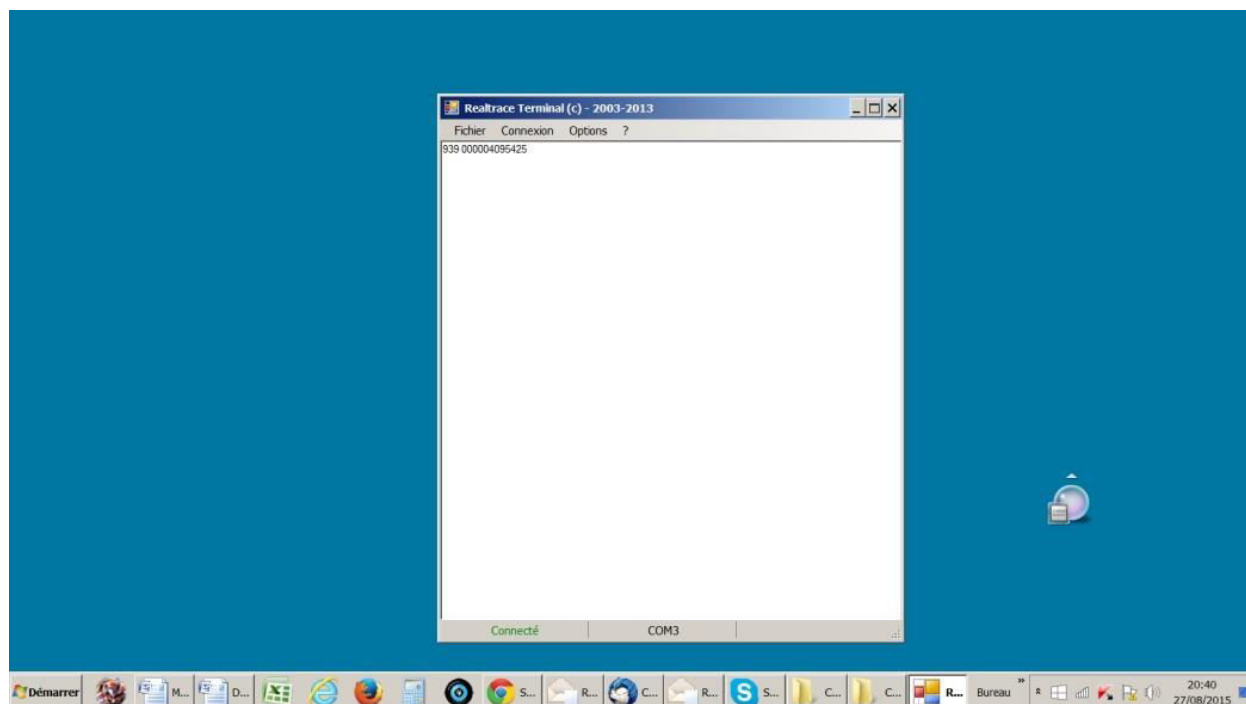
CONNECT



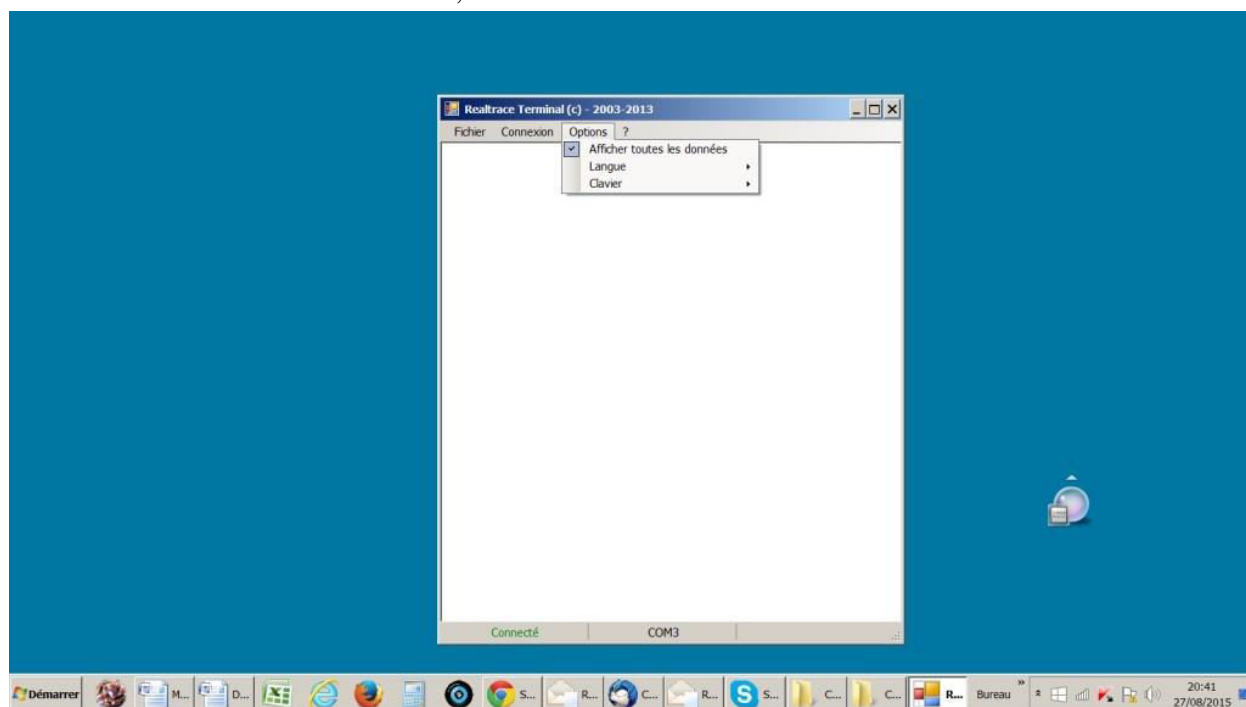
SIMPLE VIEW: ONLY ISO NUMBER



SHOWS ONLY ISO NUMBER

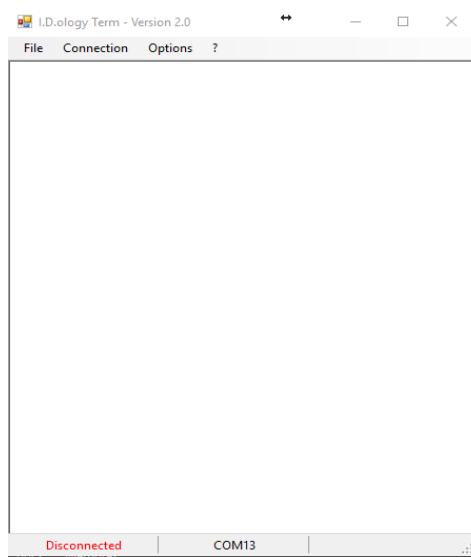


IF CHECK MARK APPEARS, YOU WILL SEE ALL DATA WHEN READING TAGS



Step by Step Instructions to read direct

1. Turn on power and Bluetooth on reader
2. Link Reader to computer through computer Bluetooth.
3. Open I.D.ology Term software. (Can be found on our webpage: ID-ology.com) under downloads.
4. Open excel and set excel to your desired settings.
5. Open I.D.ology Term software. (see image below)



6. Go to file and select connection settings.
7. Pick the com port you have the reader linked to your computer
8. Go back to file and select Link to application. This is where you select what application you would like to use Excel or I.D.ology Term. Follow on screen directions.
9. Go back to I.D.ology Term and select connection, click connect. At this point you should see the reader with a solid blue light.
10. Begin reading tags.

Additional Accessories:

Plastic carrying tube
Cell Phone Mount
Android Cell Phone